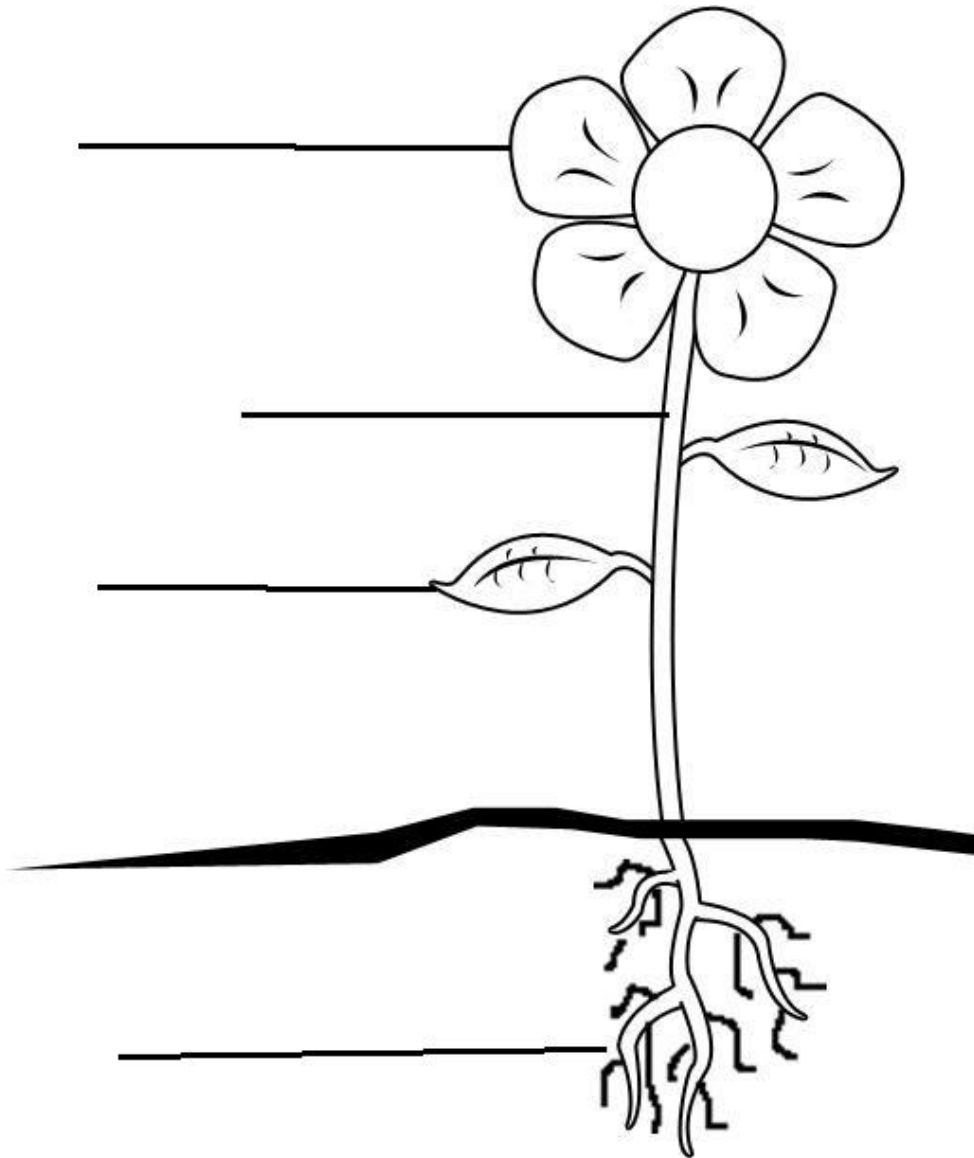


LO: I can label the main parts of a flowering plant.



ROOTS STEM LEAVES FLOWER

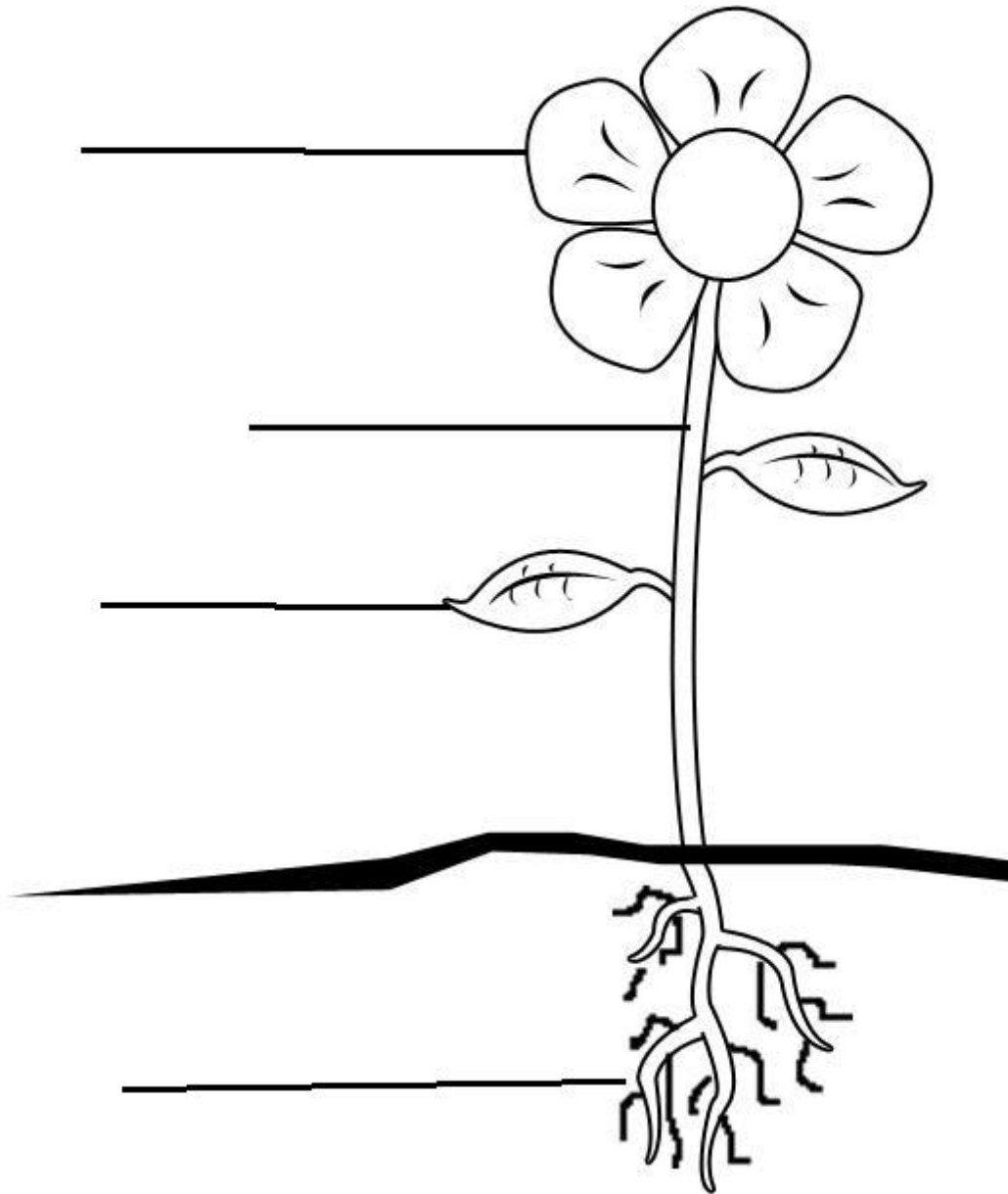
The _____ of a plant produce seeds which form new plants.

The _____ make the food for the plant. They take the water and mineral salts and use them together with sunlight and carbon-dioxide to make food. This is called Photosynthesis.

The _____ is like a straw. It moves water around the plant. It raises the leaves and flowers of the plant off the ground.

The _____ take in water and minerals from the soil. They anchor the plant into the ground.

LO: I can label the main parts of a flowering plant.



ROOTS STEM LEAVES FLOWER

The _____ makes seed to make a new flower grow.

The _____ sit in the sunshine, and make food for the plant.

The _____ is like a straw. It moves water around the plant. It is long and the flower and leaves hang from it.

The _____ take in water and food from the soil. They also help the flower to stand up still.